



New Online Banking Instructions for June 1st

1. Go to www.railwaycu.com

Find the Mobicint Login section on the far left
Sign In

Username *

Password *

SIGN IN FORGOT PASSWORD

2. Enter Current User Name: **Member Number**

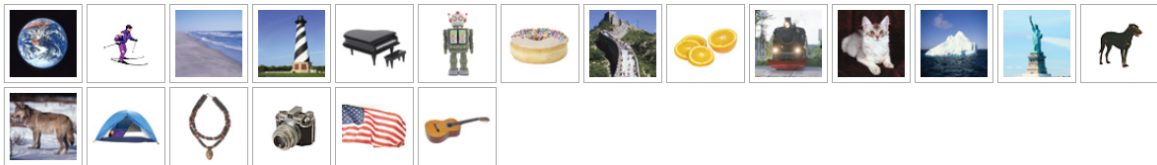
Enter Temporary Password: **JuneXXXX!** (X's are the last 4 digits of SSN)

Click **“Sign In”**

3. Select a security image that will be displayed each time you login in.

Security Image

Please select one of the following images. This image will be presented to you as additional confirmation that you are communicating with our site.



4. Select three security questions and provide answers for each one.

Challenge Questions

We will present a challenge question to further confirm your identity. This question will be randomly selected from your below responses.

Question 1

Select One

Challenge Response *

Verify Challenge Response *

5. Provide a word that you associate with to verify you are logging in the the correct system.

Captcha Security

We will prompt you to enter an obscured graphical word, when you see this word you will know you are communicating with our site.

Graphic word *

Watermelon

Captcha Preview

SUBMIT

6. Lastly, you will be prompted to change your password. The password requirements:

- 8-16 Characters (Requiring at least 1 letter, 1 number and 1 special character)

FLEX

Change Password

New Password *

Verify Password *

Password must be between 8 and 16 character(s) long
 Password must contain at least 1 alpha character(s) (A-Z a-z).
 Password must contain at least 1 digit(s).
 Password must also include at least 1 special character(s)